

REMADE FLAT PACK PATTERN

SKILL LEVEL: CONFIDENT BEGINNER

TIME COMMITMENT: ~1 HOUR (WITH ALREADY MADE QUILT BLOCK/PIECE)



HANDREMADECO.COM

INSTAGRAM: @HANDREMADECO

EMAIL: HANDREMADECO@GMAIL.COM

ALL RIGHTS RESERVED. NO PART OF THIS PATTERN MAY BE PHOTOCOPIED OR REPRODUCED IN ANY FORM WITHOUT PRIOR WRITTEN CONSENT FROM ASHELYN DOWNS OF HAND REMADE CO.

ITEMS MADE FROM THIS PATTERN MAY NOT BE REPRODUCED FOR RESALE OR COMMERCIAL USE IN ANY FORM.

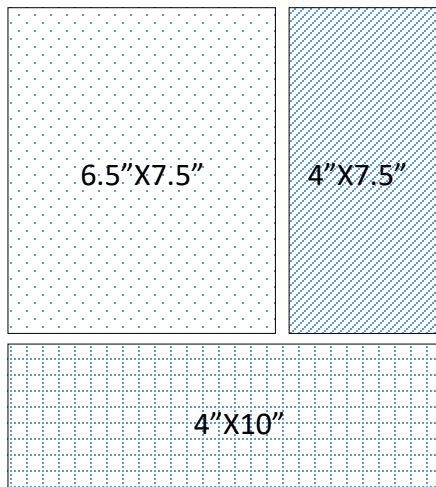
FLAT PACK BLOCK ASSEMBLY

1. Starch fabric and press well
2. Cut one (1) of each rectangle:

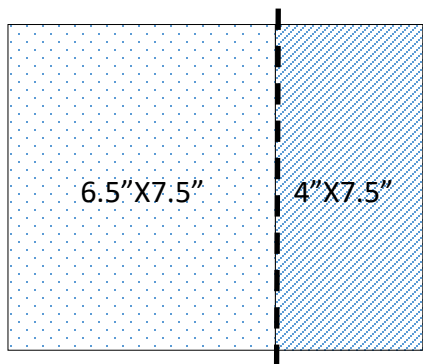
6.5" x 7.5"

4" x 7.5"

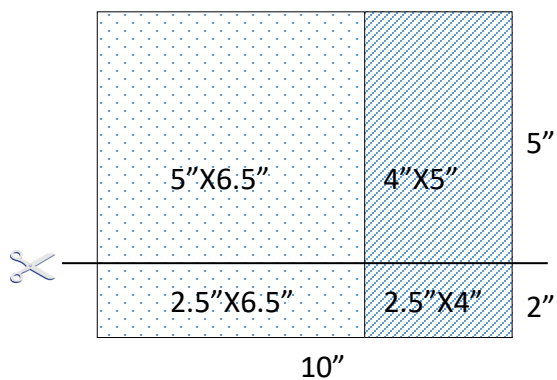
4" x 10"



3. Sew the two rectangles that measure 7.5" together along their long edges.
4. Press the seam open.

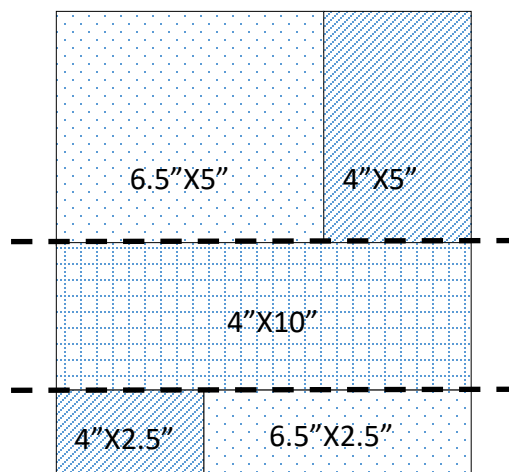


5. Cut the new rectangle to make one 5" x 10" block and one 2.5" x 10" block

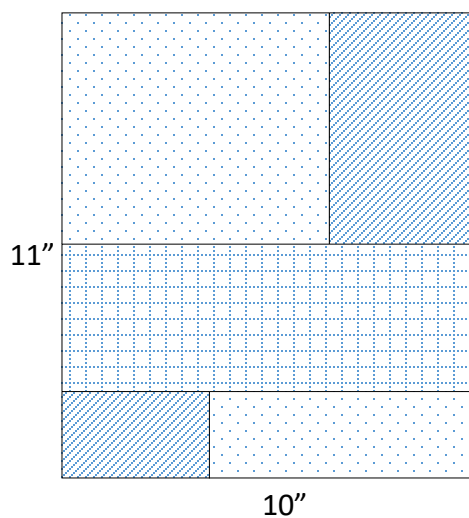


6. Rotate narrow rectangle 180 degrees so that prints are in diagonal from their matching fabric.

7. Sew both units to the long edges of the 4" x 10" rectangle.



8. Press well.
9. Quilt the panel using any desired method/ pattern and square edges.





FABRIC AND NOTIONS

- ☐ ONE 10X11 INCH QUILT PIECE/BLOCK (SEE PAGE 2 FOR BLOCK INSTRUCTIONS)
- ☐ 1/8 YARD COORDINATING FABRIC (FOR FLAPS)
- ☐ (1) 7 INCH ALL-PURPOSE ZIPPER
- ☐ 1.5 YARDS 1 INCH WEBBING (YOU WILL CUT INTO ONE 7" STRIP AND ONE 33" STRIP)
- ☐ (1) 1 INCH STRAP ADJUSTER (TRIGLIDE)
- ☐ (1) 1 INCH BUCKLE
- ☐ (1) WING PATTERN TEMPLATE PIECE (PG. 11)
- ☐ (1) CORNER TEMPLATE PIECE (PG. 11)

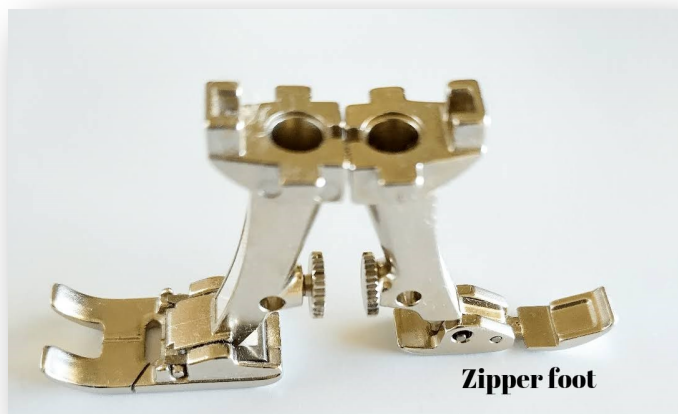
ADDITIONAL TOOLS:

- ☐ ZIPPER FOOT (HIGHLY RECOMMENDED)
- ☐ QUILTING RULER (OR MEASURING TAPE AND SCHOOL RULER)
- ☐ ROTARY CUTTER OR SCISSORS
- ☐ PINS OR CLIPS
- ☐ TEMPLATE MARKING PEN OR PENCIL

ANATOMY OF A ZIPPER



(FIGURE 1)



(FIGURE 2)

NOTES:

- READ THROUGH PATTERN IN IT'S ENTIRETY BEFORE BEGINNING.
- THE FINISHED FANNY PACK WIDTH RANGES FROM 32" - 44" (SMALL TO X-LARGE). IF YOU REQUIRE ADDITIONAL OR LESS LENGTH FOR THE BELT, BE SURE TO ACCOMMODATE THIS NEED IN STEP #3 OF CUTTING OR YOU CAN LEAVE EXTRA LENGTH AND ADJUST FITTING NEEDS JUST BEFORE THE FINAL PATTERN STEP (#35)
- DEPENDING ON THE FABRIC WEIGHT OR THICKNESS THAT YOU CHOOSE, YOU MAY WISH TO SWAP OUT YOUR MACHINE NEEDLE TO HELP MEET THE DEMANDS OF YOUR FABRIC.
- ALL STITCH LINES IN THIS PATTERN USE A 1/4 INCH SEAM ALLOWANCE. IF YOU HAVE CHOSEN A PARTICULARLY THICK QUILT PANEL, YOU MAY NEED TO ACCOMMODATE THAT ADDITIONAL THICKNESS WITH A MORE GENEROUS SEAM ALLOWANCE.

- FOR PATTERN PLACEMENT, YOUR SHORT (10") ENDS WILL BE ATTACHED TO THE ZIPPER EDGES, WITH THE CENTER OF YOUR PANEL BEING PLACED ON THE BACK OF THE FINISHED PIECE. IF THERE IS A UNIQUE OR SPECIFIC DETAIL OF THE FABRIC OR QUILT YOU WOULD LIKE FEATURED, BE SURE TO PLACE IT AT THE **BOTTOM** OF YOUR RECTANGLE.



(FIGURE 3)

CUTTING:

1. CUT 10 INCH X 11 INCH RECTANGLE FROM VINTAGE QUILT , THICK FABRIC OR PREVIOUSLY ASSEMBLED FINISHED QUILT BLOCK.
2. USING YOUR FLAP TEMPLATE PIECE, TRACE AND CUT 4 PIECES (TWO PAIRS) OUT OF YOUR COORDINATING FABRIC.
3. CUT THE WEBBING INTO (1) 7 INCH STRIP AND (1) 33 INCH STRIP.

ASSEMBLY:

4. INSTALL ZIPPER FOOT AND POSITION NEEDLE TO FAR LEFT.

5. WITH THE QUILT PIECE FACE UP, ROTATE BLOCK WITH WIDE SECTION ON TOP. (FIGURE 4)



(FIGURE 4)

6. WITH A PENCIL, MAKE A SMALL TICK TO MARK THE CENTER OF THE TOP (10") PANEL EDGE AND ZIPPER CENTER. YOU CAN USE A RULER OR SIMPLY FOLD IN HALF. (FIGURE 5)



(FIGURE 5)

7. ALIGN THE TICK MARKS WITH PANEL FACING UP AND CLOSED ZIPPER FACING DOWN WITH THE ZIPPER PULL ON THE LEFT.

PIN TOGETHER (FIGURE 6)



(FIGURE 6)



***BEFORE SEWING, BE CERTAIN THAT YOUR NEEDLE POSITION IS AS FAR LEFT AS POSSIBLE TO BE SURE NOT TO BREAK YOUR NEEDLE ON THE ZIPPER FOOT**

8. TO SEW THE ZIPPER, START EVEN WITH THE BACK OF THE ZIPPER PULL AND ALIGN RIGHT SIDE OF PRESSER FOOT WITH THE RAW EDGE OF YOUR ZIPPER/PANEL SANDWICH. YOUR STITCH WILL RUN ALONG THE LEFT OF THE ZIPPER FOOT, CREATING A 1/4 INCH SEAM ALLOWANCE. BACK-STITCH 1X. (FIGURE 7)



(FIGURE 7)

9. OPEN SEAM.

10. PIN OPEN WITH BULK OF SEAM ALLOWANCE BELOW THE PANEL PIECE. (FIGURES 8 AND 9)



(FIGURE 8)



(FIGURE 9)

11. TOP STITCH ZIPPER IN PLACE BY ALIGNING RIGHT SIDE OF ZIPPER FOOT WITH THE ZIPPER TEETH BEGINNING AT THE ZIPPER PULL AGAIN. USING THAT AS YOUR GUIDE, YOUR STITCH WILL RUN ALONG THE LEFT SIDE OF THE ZIPPER FOOT SECURING THE ZIPPER TO THE PANEL. BACKSTITCH 1X (FIGURE 10)



(FIGURE 10)

12. ALIGN FREE EDGE OF ZIPPER (FACE DOWN) TO FREE EDGE OF PANEL (FACE UP).

PIN IN PLACE.

YOU SHOULD HAVE A TUBE THAT IS INSIDE OUT. (FIGURE 11)



(FIGURE 11)

13. ALIGN THE RIGHT EDGE OF YOUR ZIPPER FOOT WITH THE RAW EDGE OF YOUR ZIPPER/PANEL SANDWICH BEGINNING ON THE END WITH THE ZIPPER BOTTOM STOP AND STITCH ALONG THE LEFT OF THE FOOT TO CREATE A 1/4 INCH SEAM ALLOWANCE. (FIGURE 12)



(FIGURE 12)

14. TO GET THE ZIPPER TO LAY FLAT FOR THE FINISHED PROJECT, WE NEED TO TURN THE TUBE RIGHT SIDE OUT AND UNZIP THE ZIPPER PIN THE SEAM OPEN WITH THE BULK OF SEAM ALLOWANCE BELOW THE PANEL PIECE. (FIGURE 13)



(FIGURE 13)

15. BEGINNING AGAIN AT THE BOTTOM STOP, USE YOUR ZIPPER FOOT AS YOUR GUIDE WITH THE ZIPPER ON THE RIGHT AND YOUR NEEDLE STITCHING ALONG THE LEFT TO TOP STITCH THE ZIPPER IN PLACE ON THE PANEL. (FIGURE 14)



(FIGURE 14)

16. YOU DID IT! ZIP THE ZIPPER AND ENSURE THAT YOUR TUBE IS INSIDE OUT. (FIGURE 15)



(FIGURE 15)

17. TO FINISH THIS GAPS NEXT TO THE TOP AND BOTTOM OF THE ZIPPER, ALIGN RAW EDGES WITH RIGHT SIDE OF ZIPPER FOOT AND SLOWLY STITCH ALONG THE EDGE UNTIL YOU REACH THE ZIPPER. BACKSTITCH AND STOP. (FIGURE 16)

18. REPEAT ON OTHER SIDE GAP, BUT BEGIN AT ZIPPER, BACKSTITCH AND SEW TOWARDS THE OUTER EDGE. (FIGURE 17)



(FIGURE 16)



(FIGURE 17)

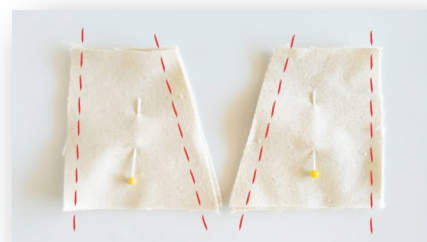
MAKE THE FLAPS:

19. SWITCH OUT ZIPPER FOOT FOR REGULAR PRESSER FOOT AND CENTER NEEDLE POSITION.

20. EACH FLAP NEEDS TWO PIECES. LAYER TWO FOR EACH. PIN IN PLACE.

****QUICK NOTE: IF YOU CHOSE A PATTERNED FABRIC, YOU WILL PLACE RIGHT SIDES (PRINTED SIDES) TOGETHER WITH THE BACK OF FABRIC FACING OUTWARDS**

STITCH ALONG BOTH LONG EDGES (FIGURE 18)



(FIGURE 18)

21. TURN RIGHT SIDES OUT SO THAT RAW EDGES ARE INSIDE (YOU NOW HAVE A TUBE)

YOU CAN PRESS TO FLATTEN OR SIMPLY PIN DOWN TO ENSURE FABRIC IS LAYING STRAIGHT
TOP STITCH LONG SEAMED EDGES AT 1/8 INCH
REPEAT FOR SECOND FLAP. (FIGURE 19)



(FIGURE 19)

22. WITH FANNY PACK STILL INSIDE OUT, UNZIP HALFWAY !!!!!**DONT FORGET THIS!!!!** AND FLATTEN WITH ZIPPER APPROXIMATELY 1 INCH FROM TOP. (FIGURE 20)



(FIGURE 20)

23. USING THE CORNER PATTERN TEMPLATE, TRACE A SEWING LINE WITH A PENCIL FOR EACH CORNER. (FIGURE 21)

IF YOU WISH FOR A SLIGHTLY DIFFERENT ANGLE, FEEL FREE TO ADJUST AS YOU'D LIKE.



(FIGURE 21)

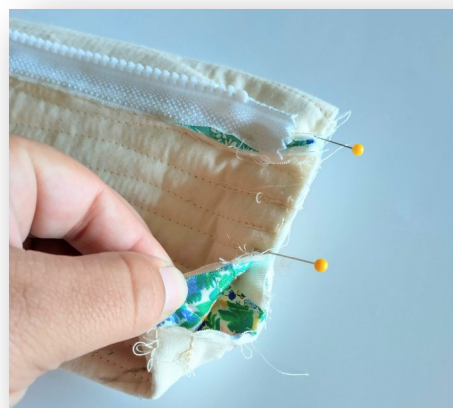
24. INSERT FLAPS OPPOSITE OF EACH OTHER WITH ANGLED EDGES DOWN AND LONG OPEN ENDS ALIGNED WITH RAW EDGES OF FANNY PACK TUBE. PIN IN PLACE. (FIGURES 22-24)



(FIGURE 22)



(FIGURE 23)



(FIGURE 24)

25. STITCH ALONG BOTH RAW EDGES WITH 1/4 INCH SEAM ALLOWANCE, FOLLOWING TRACED GUIDE LINES WITH OUTER EDGE OF PRESSER FOOT.

26. TRIM CURVED EDGE, LEAVING ABOUT 1/4" (FIGURE 25)



(FIGURE 25)

27. ZIG ZAG STITCH ALONG RAW EDGES TO PREVENT FRAYS. (FIGURE 26)



(FIGURE 26)

28. FLIP FANNY PACK RIGHT SIDE OUT. AREN'T YOU GLAD YOU LEFT IT PARTIALLY UNZIPPED? (FIGURE 27)



(FIGURE 27)

ATTACH STRAPS AND HARDWARE:

*KEEP THE BUCKLE PIECES CLICKED TOGETHER.

29. LOOP THE END OF THE 7 INCH WEBBING PIECE THROUGH STRAP CONNECTOR OF THE SLOTTED/ RECEIVING END OF THE BUCKLE.

30. NEATLY TUCK RAW EDGES OF LEFT FACING FLAP INTO ITSELF (FIGURE 28) AND PLACE BOTH RAW EDGES OF THE WEBBING INSIDE ABOUT 1 INCH, ENSURING THAT WITH THE PACK LAYING FLAT, THAT THE BUCKLE IS RIGHT SIDE UP. PIN IN PLACE. TOP STITCH ALONG EDGE A COUPLE OF TIMES (I LIKE TO STITCH, BACKSTITCH TO THE START, AND THEN STITCH FORWARD ONCE MORE) TO ENCLOSE FLAP SEAM AND SECURE WEBBING STRAP. (FIGURE 29 A&B)



(FIGURE 28)



(FIGURE 29A)



(FIGURE 29B)

31. ON THE RIGHT FACING FLAP, TUCK THE RAW EDGES OF THE FLAP INTO ITSELF AND INSERT JUST ONE END OF THE REMAINING 33 INCH STRAP SO THAT ONE END IS LOOSE. PIN IN PLACE AND TOP STITCH TO SECURE.

32. THREAD YOUR ADJUSTER PIECE BY STARTING BELOW, COMING UP AND OVER THE CENTER BAR AND THEN BACK DOWN. (FIGURES 30 A&B)



(FIGURE 30A)



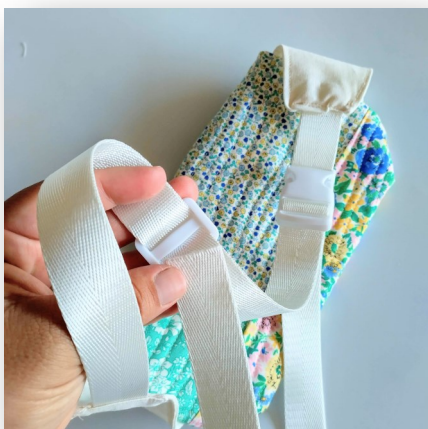
(FIGURE 30B)

33. NEXT THREAD THE STRAP THROUGH THE STRAP CONNECTOR OF THE PRONG END OF THE BUCKLE. (FIGURE 31)



(FIGURE 31)

34. TAKE THE END OF THE WEBBING AND THREAD BACK THROUGH THE UNDERSIDE OF THE ADJUSTER PIECE, DOUBLING THE WEAVE OF THE FIRST PASS. (FIGURE 32 A&B)



(FIGURE 32A)



(FIGURE 32B)

35. TO FINISH THE END, TUCK FRAYED EDGE (YOU MAY NEED TO TRIM ANY FRAYING FIRST) UNDER ITSELF AND PLACE ON TOP OF THE WEBBING JUST BEHIND THE CENTER OF THE ADJUSTER PIECE. PIN IN PLACE AND STITCH ACROSS, MAKING SURE TO BACKSTITCH (FIGURE 33)



(FIGURE 33)

THAT'S IT! YOU'VE JUST FINISHED YOUR PROJECT!

I'D LOVE TO KNOW HOW YOURS TURNED OUT AND SEE PROGRESS PHOTOS— BE SURE TO SHARE ON INSTAGRAM AND TAG ME: @HANDREMADECO

AND USE THE HASHTAG

#REMADEFLATPACKPATTERN

